

Avonite ADVANC3™



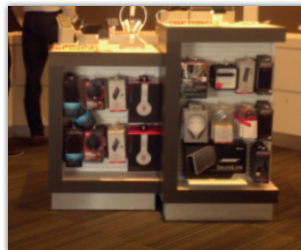
3mm Surfacing

- ADVANC3™ is a 100% acrylic 1/8" (3mm) solid surface material that is seamless, renewable, and hygienic just like Avonite's 1/2" (12mm) and 1/4" (6mm) Foundations™ products.
- ADVANC3™ is great for surfacing applications in retail displays. ADVANC3™ comes in sizes up to 60" (1524mm) wide and 204" (5182mm) long that can be laminated to rigid substructures like MDF.
- ADVANC3™ is a great product for hospital applications like nurses stations, work stations, and patient room countertops. Being solid surface, it is hygienic.
- ADVANC3™ can provide significant cost savings over using traditional 1/2" (12mm) solid surface and deliver the same benefits in many applications.
- ADVANC3™ is a great substitute for high-pressure laminate where you demand a hygienic environment with no seams.
- ADVANC3™ is great for non-kitchen applications where you demand durability and ease of maintenance.

FEATURES	BENEFITS
ADVANC3™ vs 1/2" (12mm)	Material & shipping cost savings
100% acrylic solid surface	Seamless & renewable = hygienic, durable, easy to maintain
Under mount, integral sinks	Integral, seamless sinks = hygienic & esthetic
Custom size up to 60" (1524mm) wide	Reduced seams = faster install = more projects per year Reduced seams = less labor = less labor costs Optimized sheet = less waste = less material costs
ADVANC3™ vs high-pressure laminate	Seamless, renewable, hygienic, and has a durable edge
ADVANC3™ is more thermoformable than 1/2" (12mm)	Ease of fabrication and flexibility of design



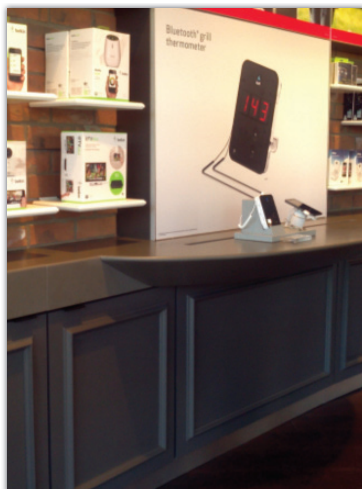
Retail Display



Retail Display



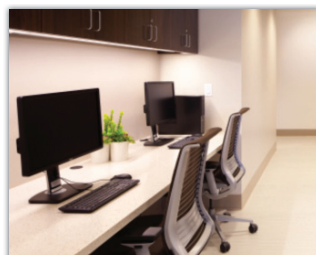
Nurses' Station



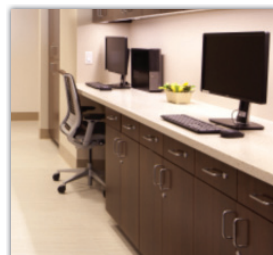
Retail Display



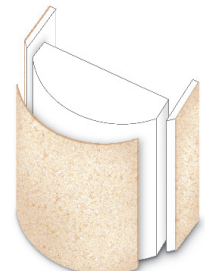
Patient Room



Work Station



Work Station



Avonite ADVANC3™ Colors and Textures



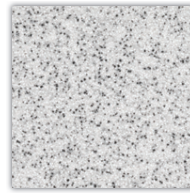
White 8017
A 3



Super White 8025
A 3



Cream 8022
A 3



Stormy Gray 9010
B 3

ADVANC3™		
THICKNESS	3 3mm (1/8")	COST
		(A) \$
		(B) \$\$
(C) \$\$\$		
100% Acrylic Surfacing		Standard Sheet Size: 49" x 97" (1245mm x 2464mm)



Bronze 7830
B 3



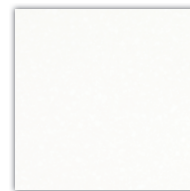
Aspen 9105
B 3



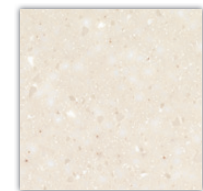
Artica 9065
B 3



Sand Castle 9031
B 3



Kokoura 9117
C 3



Casablanca 9137
C 3

Physical Properties

All data contained herein applies to the 3mm solid surface sheet alone. Technical data relative to the finished, laid-up product is not included here and will vary based on the substrate and assembly methods used.

PROPERTY	TYPICAL VALUES	TEST METHOD
General:		
Thickness	0.125 in (3.17mm)	
Specific Gravity	1.60	ASTM D-792
Water Absorption	0.04%	ASTM D-570
Mechanical:		
Tensile Strength	4,000 psi	ASTM D-638
Tensile Modulus	1,070,000 psi	ASTM D-638
Tensile Elongation	1.5%	ASTM D-638
Flexural Strength	7,600 psi	ASTM D-790
Flexural Modulus	940,000 psi	ASTM D-790
Izod Impact (Un-notched)	1.17 ft-lbs/in	ASTM D-4812
Notched Izod Impact	0.48 ft-lbs/in	ASTM D-256
Rockwell Hardness (M)	73	ASTM D-785
Barcol Hardness	59	ASTM D-2583

ADVANC3™ is not to be used in a kitchen environment where hot cooking appliances or dishwashers are used.

ADVANC3™ can be restored. Visible damage to finishes caused by impacts or scratches and chemicals can easily be removed using a Scotch-Brite® sponge. Stubborn changes in finishes can be removed by sanding.

For cautions and other information relating to handling of an exposure to this product, please see the applicable safety data sheet published by Aristech Acrylics LLC.

PROPERTY	TYPICAL VALUES	TEST METHOD
Thermal:		
DTUL ® 264 psi (1.82 MPa)	195 °F	ASTM D-648
Coeff. of Linear Thermal Expansion	2.3 x 10 ⁻⁶ in./in./°F	ASTM D-696
Boiling Water Resistance	No Effect	ISSFA SST 8.1-00
High Temperature Resistance	No Effect	ISSFA SST 9.1-00
Flame Spread Index	<75	ASTM E-84
Smoke Generation Index	<100	ASTM E-84
Combustion Toxicity	Solid Colors - 98	Pittsburgh Protocol
	Patterns - 67	(LC ₅₀ Test)
Surface:		
Consistency of Color (Same Sheet)	Passes	ISSFA SST 2.1-00
Light Resistance	No Effect	ISSFA SST 7.1-00
Cleanability/Stain Resistance	13/No Effect	NEMA LD3-3.4
Stain Resistance	Passes	ANSI-Z124.3
Fungi Resistance	No Growth	ASTM G-21
Food Zone Use	NSF 51 Approved	NSF

For additional colors not part of the custom program, see avonitesurfaces.com. Avonite's color lab can also make custom colors.

US HEADQUARTERS

7350 Empire Drive
Florence, KY 41042

+1 (859) 283-1501
(800) 354-9858
+1 (859) 283-7378 FAX

info@aristechsurfaces.com

aristechsurfaces.com

INTERNATIONAL CONTACTS

+1 859 283 1501

Western Europe:
+353 86 100 1972

Eastern Europe & Middle East:
+420 602 346 467

Southeast Asia:
+65 965 16195

North Asia, Australia & New Zealand
+852 9124 5564 / +86 1390 1876
396

